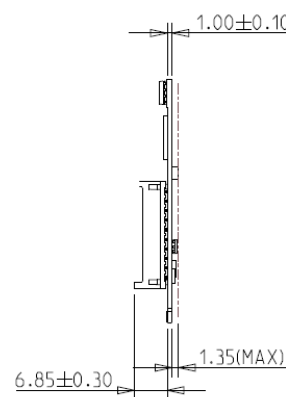
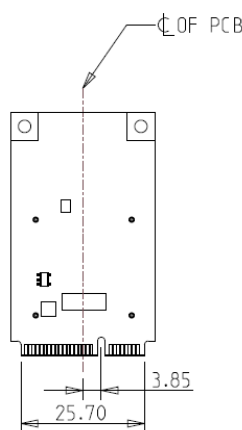
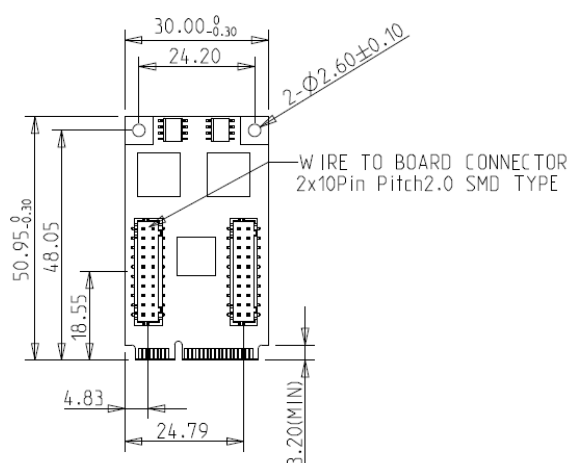
**Features**

- Supports dual isolated GbE LAN ports
- Two independent PSE channels
- Supports 12V~24V power input via DC-Jack
- Complies with IEEE 802.3af, up to 15.4W at 48V per PoE port.
- Complies with IEC 60950-1:2005 + A1: 2009 + A2:2013 1.7KV HiPOT protection
- Complies with EN61000-4-2 (ESD) Air-15kV, Contact-8kV
- Industrial temperature -40 °C to 85 °C

**Mechanical Drawing****Specifications**

|                   |  |
|-------------------|--|
| Form-Factor       | mPCIe  |
| Input I/F         | PCI Express 2.1 x 1  |
| Output I/F        | PoE x 2  |
| Output Connector  | RJ45 x 2   |
| Power Consumption | 30W  |
| Dimension (WxLxH) | Main Board: 30 x 50.9 x 9.2 mm<br>Daughter Board: 58.2 x 72.7 x 23.8 mm  |
| Temperature       | Operation: STD: 0°C ~ +70°C. W/T: -40°C ~ +85°C<br>Storage: -55°C ~ +95°C  |
| Environment       | Vibration: 5G @7~2000Hz, Shock: 50G @ 0.5ms  |
| Notes             | Please download driver from Intel official website.<br>Windows: XP(32bit), 7(32/64bit), 8/8.1(32/64 bit), 10(32/64bit)<br>Linux: kernel 2.4 series, 2.6.x and 3.x version. |
| Limitations       | EMPL-G2P1 series does not recommend used in VMware ESXi due to High Latency  |

**Headquarters (Taiwan)**

5F., No.237, Sec. 1, Datong Rd.,  
Xizhi Dist., New Taipei City 221,  
Taiwan

Tel: +886-2-7703-3000

Email: sales@innodisk.com

**Branch Offices:****USA**

[usasales@innodisk.com](mailto:usasales@innodisk.com)

+1-510-770-9421

**Europe**

[eusales@innodisk.com](mailto:eusales@innodisk.com)

+31-40-3045-400

**Japan**

[jpsales@innodisk.com](mailto:jpsales@innodisk.com)

+81-3-6667-0161

**China**

[sales\\_cn@innodisk.com](mailto:sales_cn@innodisk.com)

+86-755-2167-3689

[www.innodisk.com](http://www.innodisk.com)

© 2022 Innodisk Corporation.  
All right reserved. Specifications  
are subject to change without  
prior notice.

November 26, 2022

**Order information**

**EMPL-G2P1-C3 (Mounting hole, DC Jack, Standard Temp.)**

**EMPL-G2P1-W3 (Mounting hole, DC Jack, Wide Temp.)**

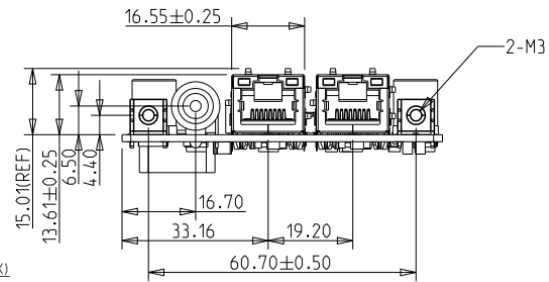
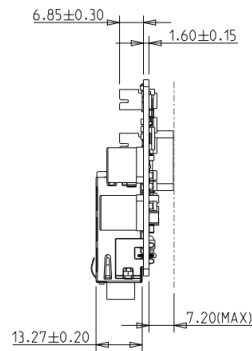
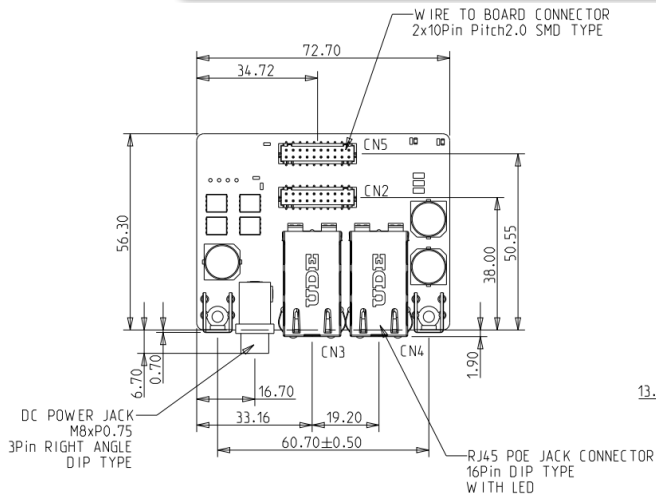
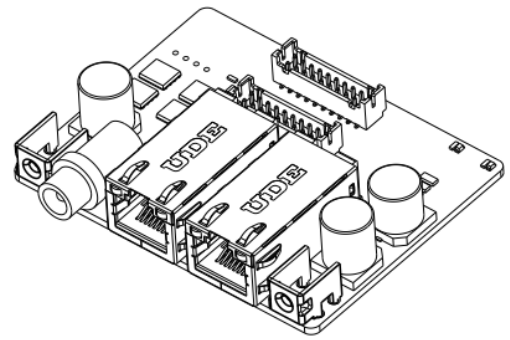
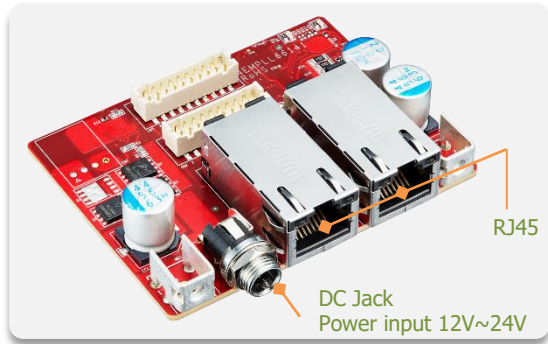
**EMPL-G2P1-C4 (Bracket, DC Jack, Standard Temp.)**

**EMPL-G2P1-W4 (Bracket, DC Jack, Wide Temp.)**

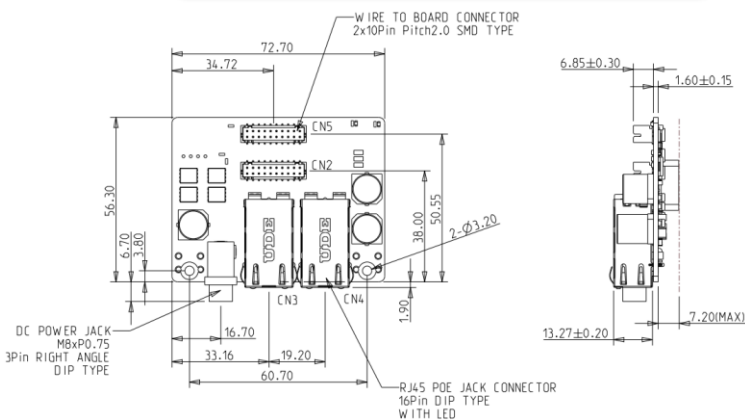
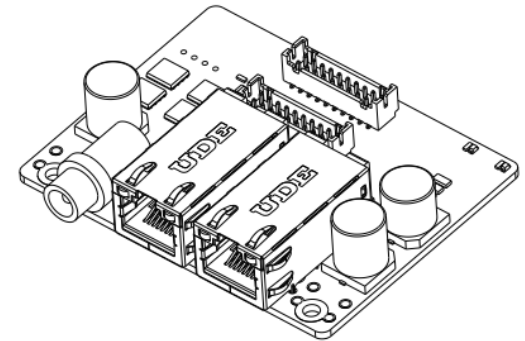
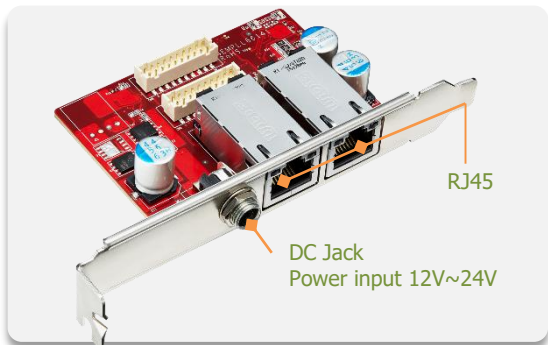
mPCIe to Dual Isolated PoE Module

[www.innodisk.com](http://www.innodisk.com)

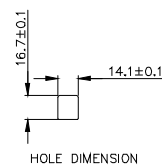
## EMPL-G2P1-C3/W3 Daughter Board and Mechanical Drawing



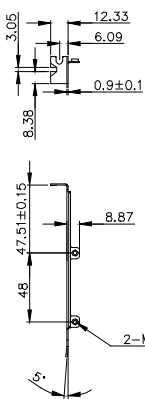
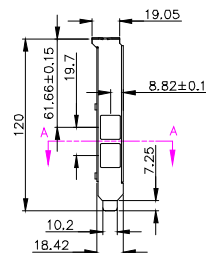
## EMPL-G2P1-C4/W4 Daughter Board and Mechanical Drawing



### Bracket



### SECTION A-A



TOLERANCE:  $\pm 0.20\text{mm}$